

1.4 Using Graphs to Relate Two Quantities

Dependent: depends on something else

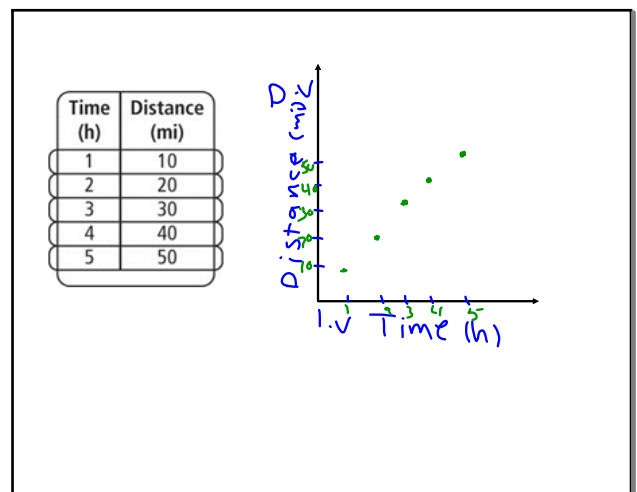
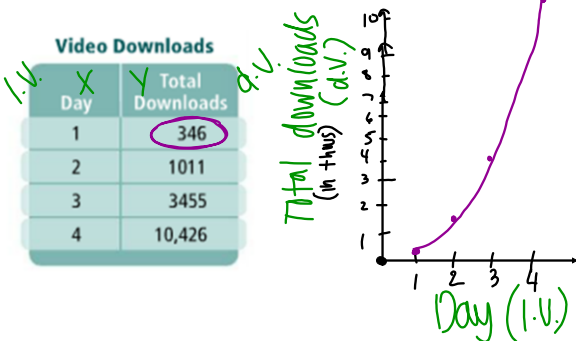
Independent: doesn't rely on anything. can stand alone

Jun 1-10:11 PM

Jun 2-9:36 AM

Tables and graphs can both show relationships between variable.

Data from a table are often displayed using a graph to visually represent the relationship



Oct 14-12:29 PM

Oct 14-12:33 PM