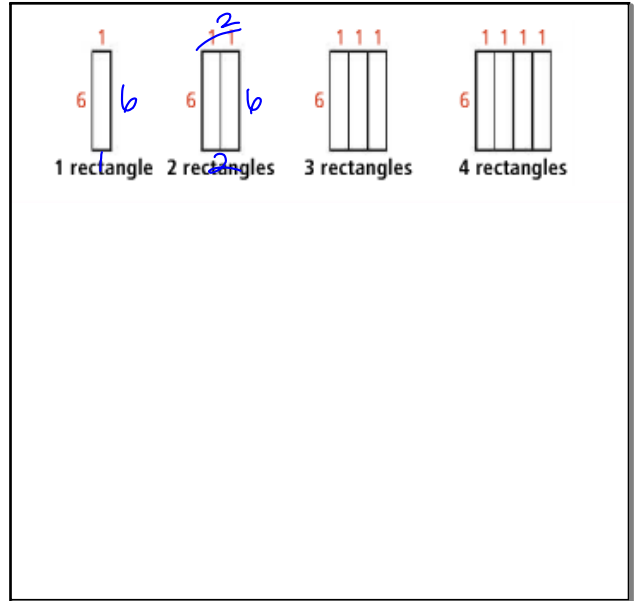


1.1 Patterns and Linear Functions



Mar 24-2:41 PM

Mar 24-2:42 PM

Step 1:

Find the perimeter of the shapes.

To find the perimeter add all sides of the shape together

# of rectangles	perimeter
1	$6+6+1+1=14$
2	$6+6+2+2=16$
3	$6+6+3+3=18$
4	$6+6+4+4=20$

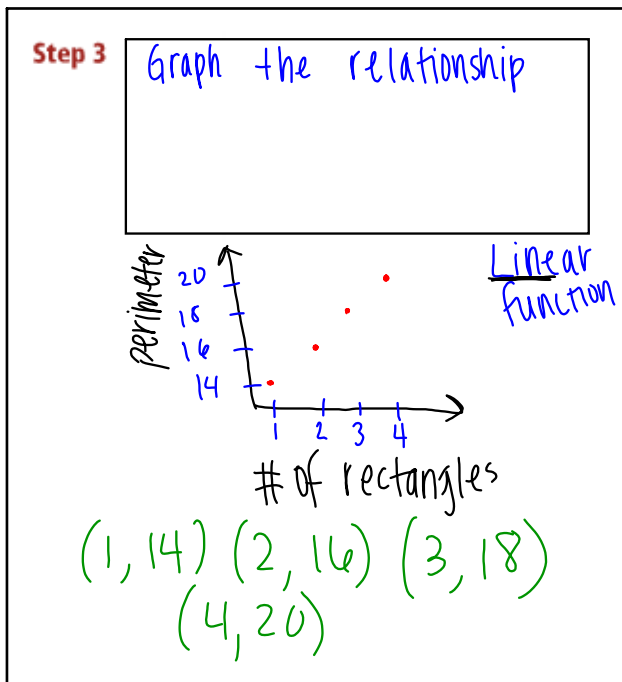
Step 2:

express relationship using words

* everytime you add a rectangle, the perimeter increases by 2.

Mar 24-2:42 PM

Mar 24-2:43 PM



Mar 24-2:43 PM

Step 4: write an equation

$n = \#$ of rectangle
 $P =$ perimeter

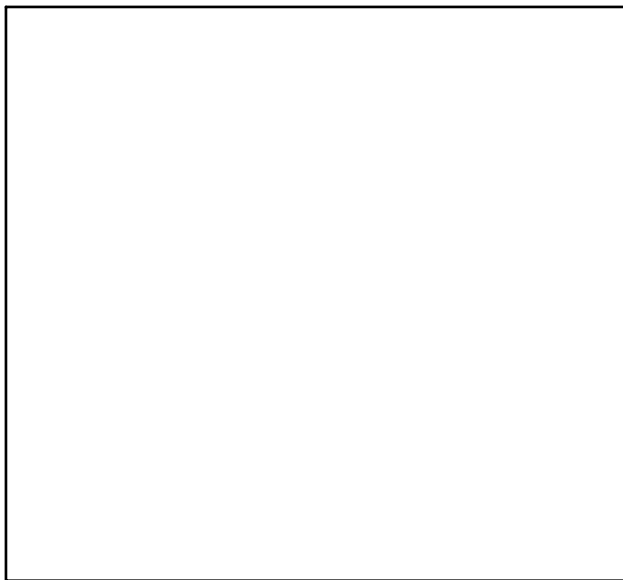
$$P = 2n + 12$$

$$P = 2(5) + 12$$

$$P = 10 + 12$$

$$P = 22$$

Mar 24-2:43 PM



Mar 24-2:44 PM