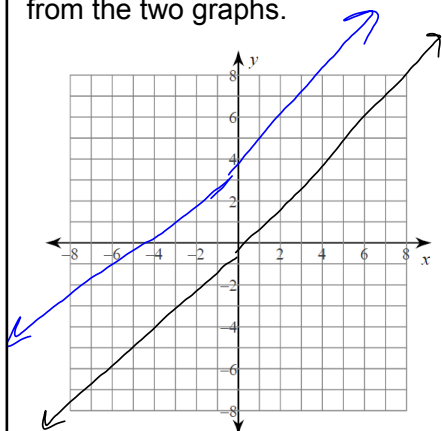


# Bell Ringer

04/09/15

Day 12 Week 3

1. The graph below contains two graphs. One is the parent graph, the other is a "shift". Explain the changes from the two graphs.



2. Find the range for the given domain:

$$f(x) = -4x + 3; \{-1, 0, 1, 2, 3\}$$

Apr 10-7:22 AM